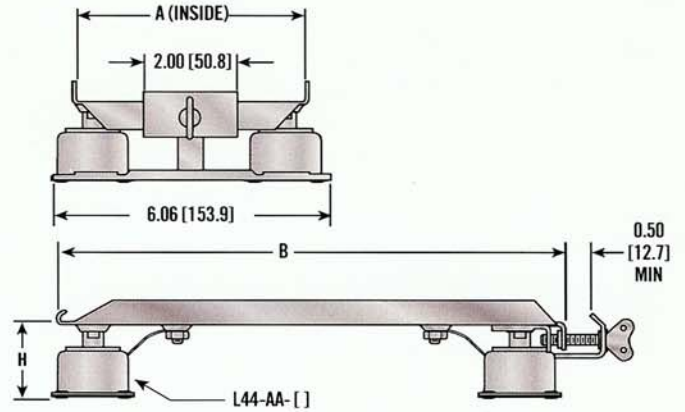
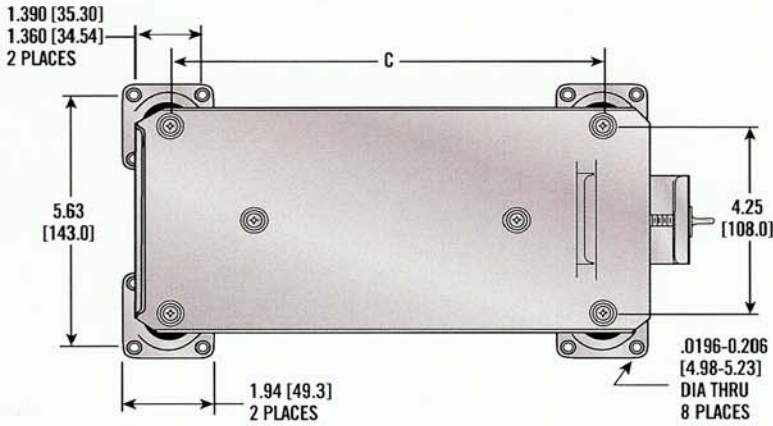


MS91404 (TOLA) Trays



| MILITARY STANDARD # | CATALOG SUFFIX # | EQUIP WT LBS [KG] | ± .030 A | ± .030 B | ± .030 C | APPROX WT LBS [GR] |
|---------------------|------------------|-------------------|--------------|---------------|---------------|--------------------|
| MS91404-S1 | S1-A1/2 | 1-2 [0.5-0.9] | 5.31 [134.9] | 10.12 [257.2] | 8.25 [209.6] | 1.00 [454.5] |
| | S1-A1 | 2-4 [0.9-1.8] | 5.31 [134.9] | 10.12 [257.2] | 8.25 [209.6] | 1.01 [459.1] |
| | S1-A2 | 4-8 [1.8-3.6] | 5.31 [134.9] | 10.12 [257.2] | 8.25 [209.6] | 1.01 [459.1] |
| | S1-A3 | 6-12 [2.7-5.5] | 5.31 [134.9] | 10.12 [257.2] | 8.25 [209.6] | 1.02 [463.6] |
| | S1-A4 | 8-16 [3.6-7.3] | 5.31 [134.9] | 10.12 [257.2] | 8.25 [209.6] | 1.03 [468.2] |
| | S1-A5 | 10-22 [4.5-10.0] | 5.31 [134.9] | 10.12 [257.2] | 8.25 [209.6] | 1.03 [468.2] |
| MS91404-S2 | S2-A10 | 20-40 [9.1-18.2] | 5.31 [134.9] | 10.12 [257.2] | 8.25 [209.6] | 1.03 [468.2] |
| | S2-A1/2 | 1-2 [0.5-0.9] | 4.94 [125.4] | 13.31 [338.1] | 11.62 [295.3] | 1.11 [504.5] |
| | S2-A1 | 2-4 [0.9-1.8] | 4.94 [125.4] | 13.31 [338.1] | 11.62 [295.3] | 1.11 [504.5] |
| | S2-A2 | 4-8 [1.8-3.6] | 4.94 [125.4] | 13.31 [338.1] | 11.62 [295.3] | 1.11 [504.5] |
| | S2-A3 | 6-12 [2.7-5.5] | 4.94 [125.4] | 13.31 [338.1] | 11.62 [295.3] | 1.2 [509.1] |
| | S2-A4 | 8-16 [3.6-7.2] | 4.94 [125.4] | 13.31 [338.1] | 11.62 [295.3] | 1.2 [509.1] |
| MS91404-S2 | SA2-A5 | 10-22 [4.5-10.0] | 4.94 [125.4] | 13.31 [338.1] | 11.62 [295.3] | 1.13 [513.6] |
| | S2-A10 | 20-40 [9.1-18.2] | 4.94 [125.4] | 13.31 [338.1] | 11.62 [295.3] | 1.13 [513.6] |



COMMERCIAL



VEHICLES



FIXED



IFE



HELICOPTER

Engineering
Project Management
Manufacturing
Testing
Quality

**+50 YEARS
EXPERIENCE IN
THE AEROSPACE
INDUSTRY**

ARINC 404, 404A, 600, etc
MS14108
Mil-F-85731
Mil-STD 810
RTCA-DO/160
Mil-STD 167



COMMERCIAL



MILITARY



ENGINEERED



ENCLOSURES



HARDWARE



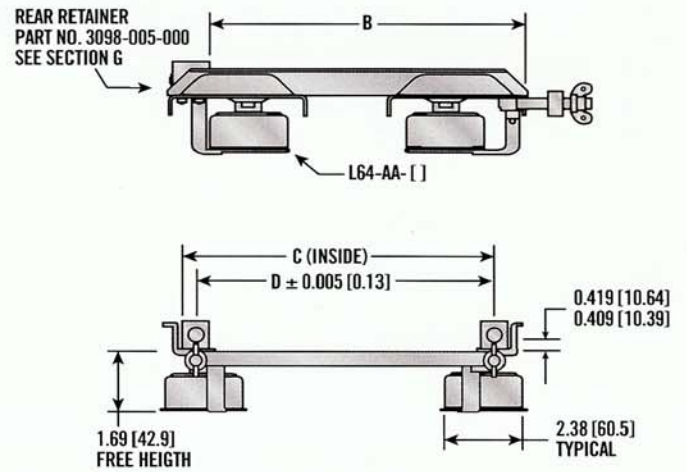
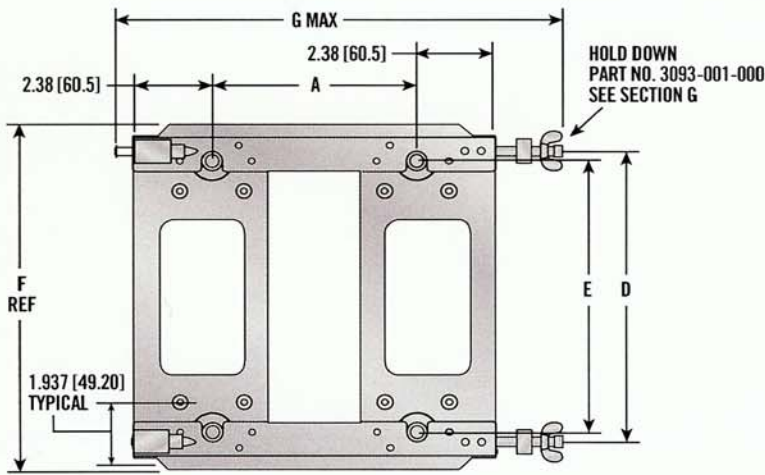
HUTCHINSON

Distributed by:

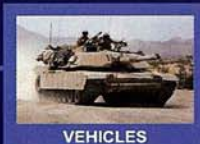
AEK Technology, Inc.
13041 Bradley Avenue
Sylmar, CA 91342 USA

P: 818 686-1445
F: 818 686-1448
www.aektechnology.com

MS91405 (AOLA) Trays



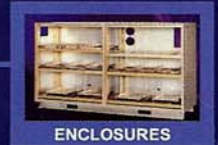
| CODE | DIMENSIONS | | | | | | | ATR SIZE | LOAD RANGE LB | WT (LB) |
|--------------|------------|--------|--------|--------|--------|--------|--------|------------|---------------|---------|
| | A | B | C | D | E | F | G | | | |
| A1B | 9.062 | 12.625 | 5.000 | 4.125 | 3.500 | 5.875 | 16.312 | 1/2 SHORT | 8 to 18 | 1.94 |
| A1C | 12.062 | 15.625 | 5.000 | 4.125 | 3.500 | 5.875 | 19.312 | 1/2 MEDIUM | 12 to 20 | 2.13 |
| A1D | 16.062 | 19.625 | 5.000 | 4.125 | 3.500 | 5.875 | 23.312 | 1/2 LONG | 18 to 40 | 2.26 |
| B1B | 9.062 | 12.625 | 10.250 | 9.375 | 8.750 | 11.125 | 16.312 | 1/2 SHORT | 18 to 40 | 2.19 |
| B1C | 12.062 | 15.625 | 10.250 | 9.375 | 8.750 | 11.125 | 19.312 | 1 MEDIUM | 18 to 40 | 2.19 |
| AS DRAWN B1D | 16.062 | 19.625 | 10.250 | 9.375 | 8.750 | 11.125 | 23.312 | 1 LONG | 25 to 50 | 2.44 |
| C1C | 12.062 | 15.625 | 15.500 | 14.625 | 14.000 | 16.375 | 19.312 | — | 40 to 80 | 2.31 |
| C1D | 16.062 | 19.625 | 15.500 | 14.625 | 14.000 | 16.375 | 23.312 | 1 1/2 LONG | 40 to 80 | 2.57 |



Engineering
Project Management
Manufacturing
Testing
Quality

**+50 YEARS
EXPERIENCE IN
THE AEROSPACE
INDUSTRY**

ARINC 404, 404A, 600, etc
MS14108
Mil-F-85731
Mil-STD 810
RTCA-DO/160
Mil-STD 167



HUTCHINSON

Distributed by:

AEK Technology, Inc.
13041 Bradley Avenue
Sylmar, CA 91342 USA

P: 818 686-1445
F: 818 686-1448
www.aektechnology.com